



# Learning to love your data

Kyle Knierim, MD

EvidenceNOW Southwest PLW

April 2017



Data? OH NO!!!!





# Overview

- What's the big deal about health data?
- Approaching data like an athlete
- Data caveats
- ENSW data help



# What's the big deal about data?

## Traditional Model

Individual providers

Treating sick individuals

Volume

Locations and hours convenient for providers

Treating all patients the same

Responsible for those who seek our services

Best efforts



## New Model

Collaborative teams

Keeping groups of people healthy

Outcomes

Care convenient to patients

Individually customized care plans

Responsible for needs of the communities

Highly reliable organizations

# What's the big deal about data?

## Traditional Model

Individual providers

Treating sick individuals

Volume

Locations and hours convenient for providers

Treating all patients the same

Responsible for those who seek our services

Best efforts

## New Model

Collaborative teams

Keeping groups of people healthy

Outcomes

Care convenient to patients

Individually customized care plans

Responsible for needs of the communities

Highly reliable organizations



# Data and Dollars

## MIPS scores activities in 4 domains:



Quality



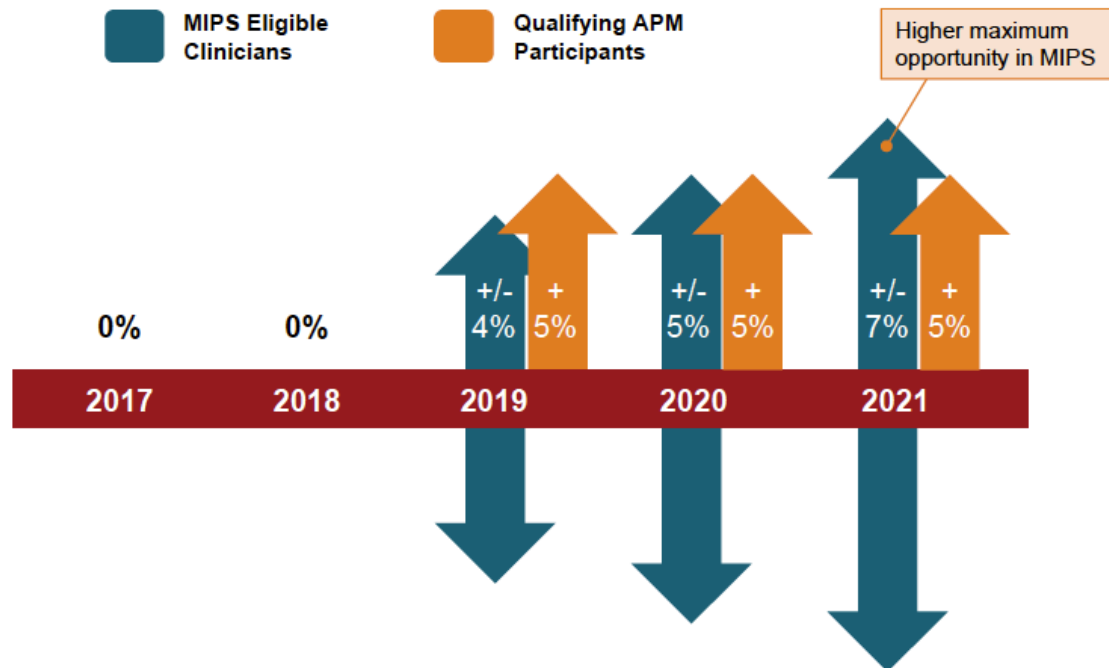
Resource use



Clinical practice improvement activities



Meaningful use of certified EHR technology



Medicare reimbursements will be adjusted based on the composite score. As much as a 14-18% swing from high to low performers.

# Why do we need data?



*"My question is: Are we making an impact?"*

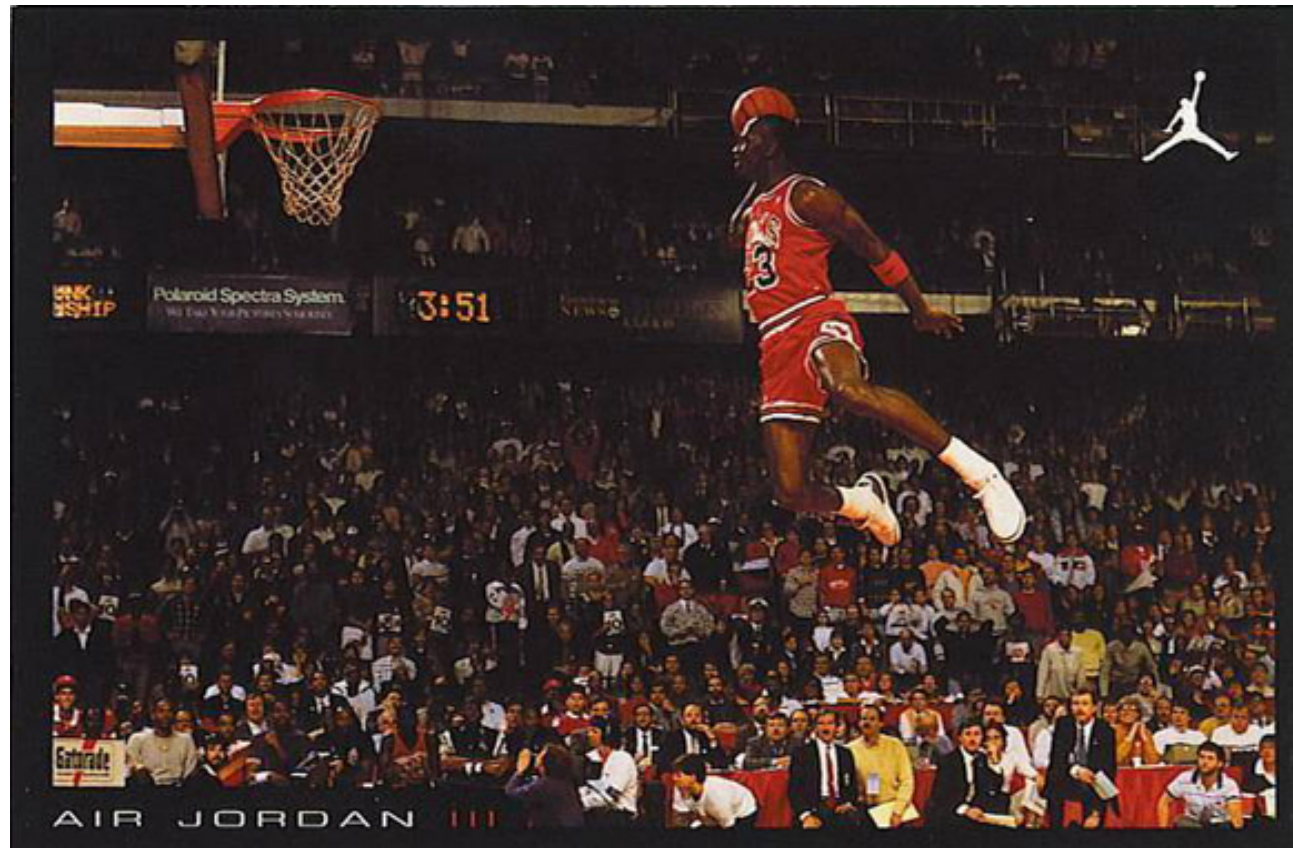
# Approaching data like an athlete

- How good are we?
- How can we get better?



# Approaching data like an athlete

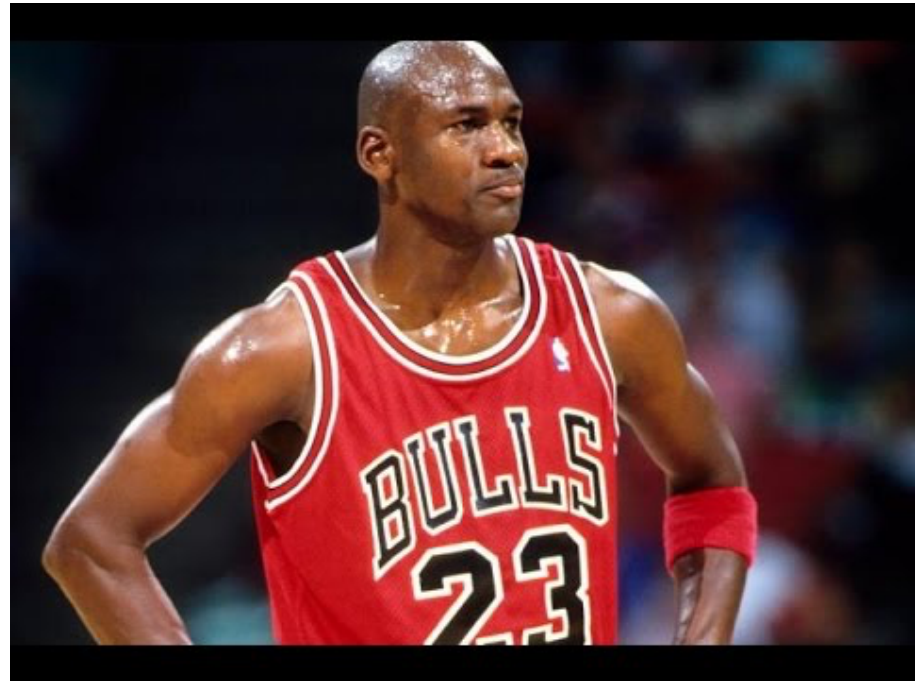
- How do you know Jordan was great?



# Approaching data like an athlete

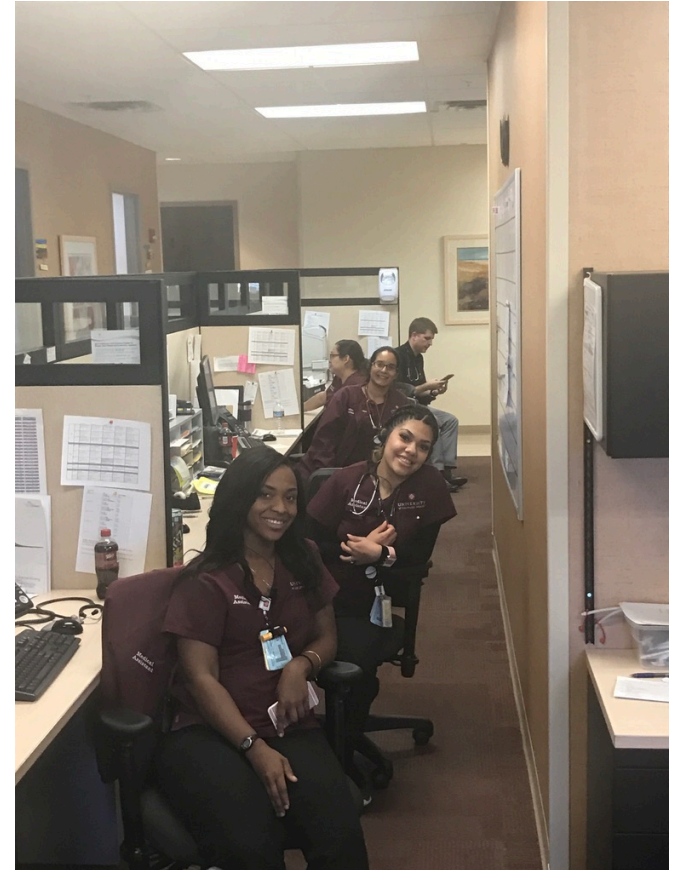
- How do you know Jordan was great?

Basketball hall of fame  
6 championships  
5 time NBA MVP  
6 time NBA finals MVP  
14 all star appearances  
10 time scoring leader  
2 Olympic gold medals  
Averaged 30.1 ppg



# Approaching data like an athlete

- How do you know your primary care team is great?







# Approaching data like an athlete

- How do athletes get better?

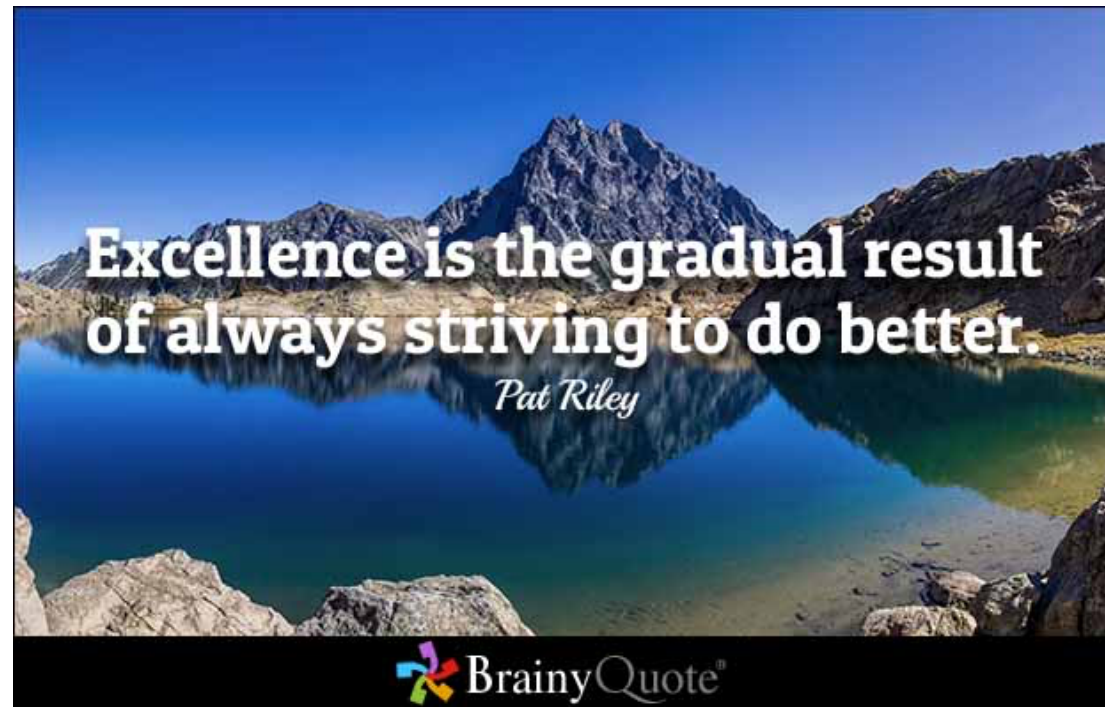
# Approaching data like an athlete

- Fundamentals!



# Approaching data like an athlete

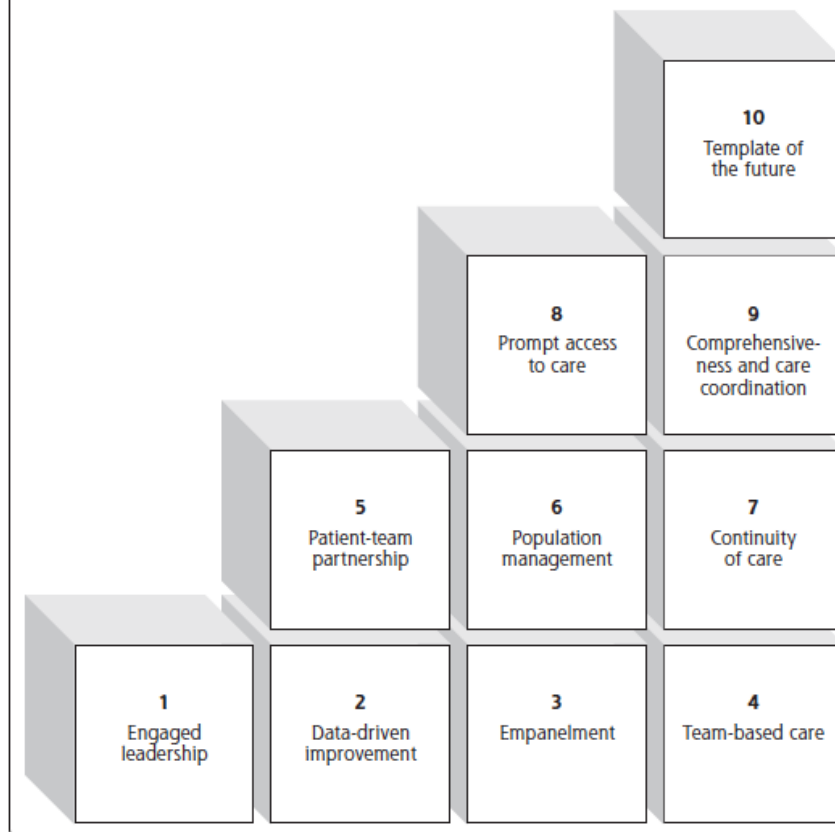
- How can a primary care clinic get better?



# Approaching data like an athlete

- How can a primary care clinic get better?

Figure 1. Ten Building blocks of high-performing primary care.



# ENSW and the ABCS Measures

## Status of the ABCS

<b>A</b> spirin	People at increased risk of cardiovascular disease who are taking aspirin	<b>47%</b>
<b>B</b> lood pressure	People with hypertension who have adequately controlled blood pressure	<b>46%</b>
<b>C</b> holesterol	People with high cholesterol who have adequately controlled hyperlipidemia	<b>33%</b>
<b>S</b> moking	People trying to quit smoking who get help	<b>23%</b>

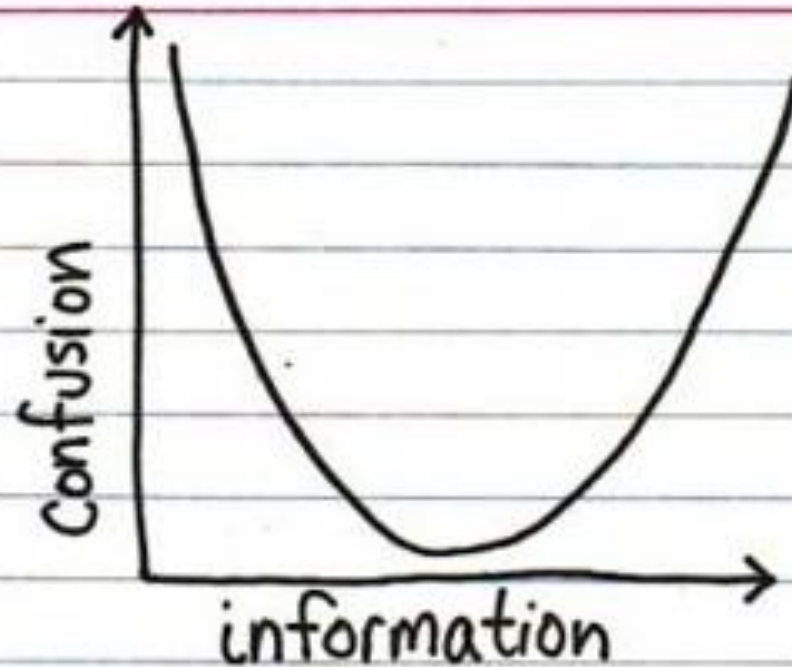
# ENSW and the ABCS Measures

- CHITAs are there to help
- Practice Facilitators and Academic Detailers can help identify fundamentals to work on to improve your data
- Compare your performance to 150+ other practices in ENSW
- PRIME and ways to get to your data



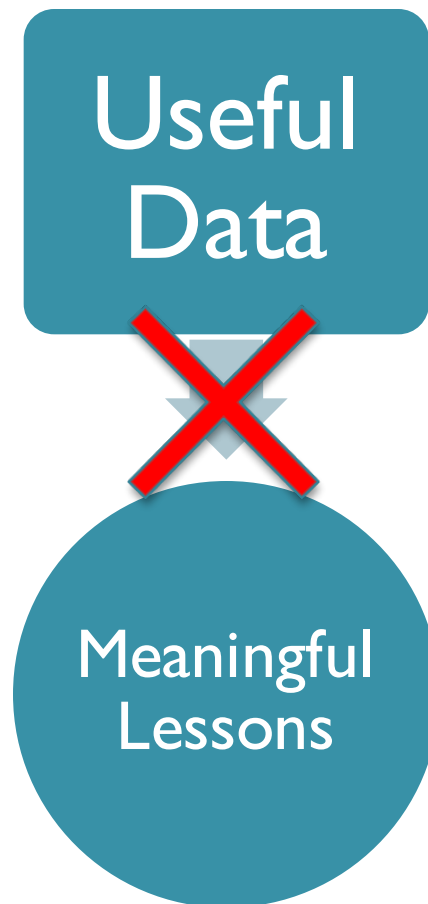
# \*Caveats

- ❖ Too much of a good thing



## \*Caveats

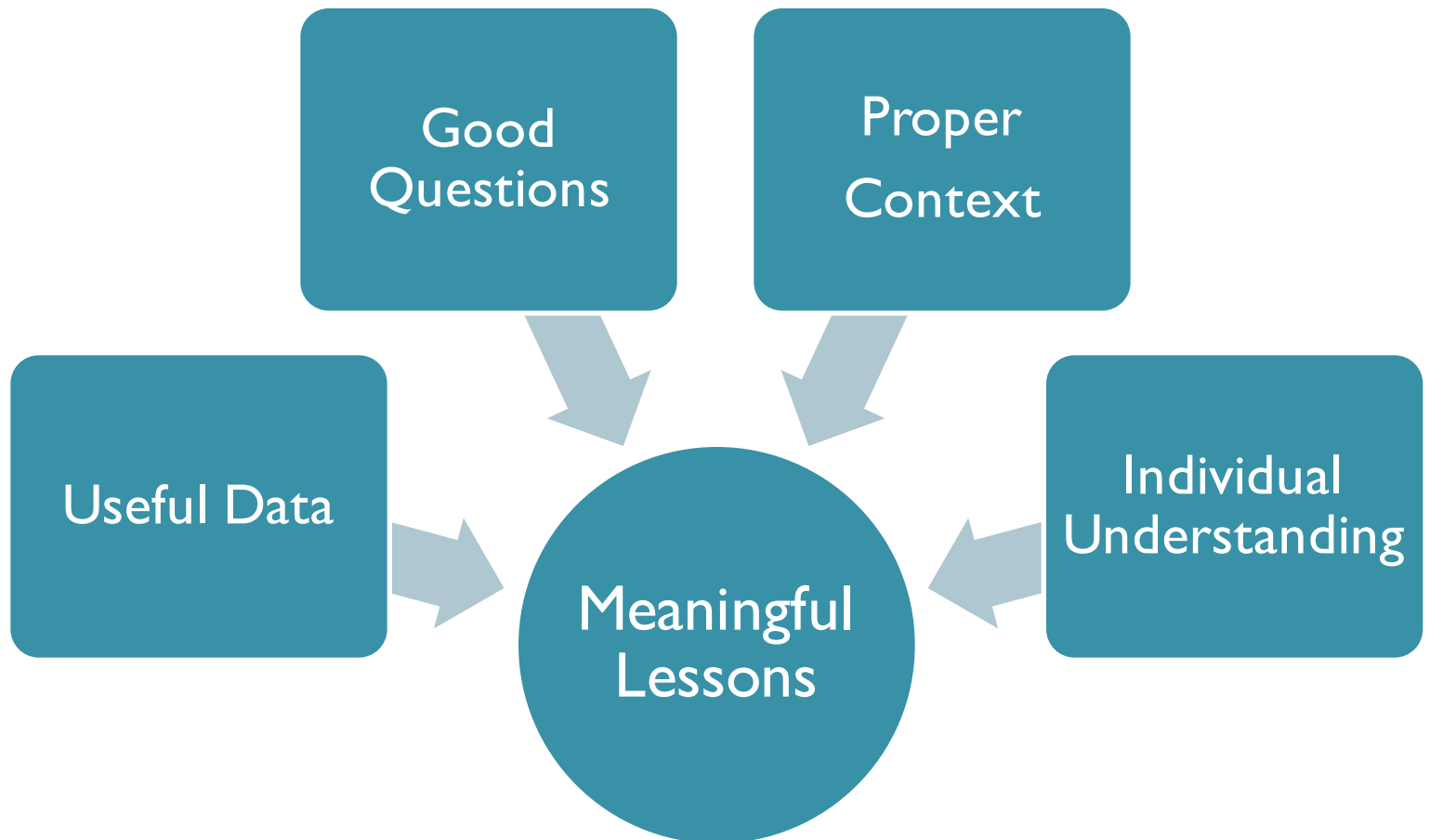
- ❖ Data is only one piece of the equation






# \*Caveats

❖ Data is only one piece of the equation





People need:  
Words to tell,  
Numbers and pictures to show, and  
Stories to understand.

- Larry Green, MD

# Why Are We Really Doing This?



**THANK YOU**

**GRACIAS**  
**ARIGATO**  
**SHUKURIA**  
**JUSPAXAR**  
**DANKSCHEEN**  
**TASHAKKUR ATU**  
**YAQHANYELAY**  
**SUKSAMA**  
**EKHMET**  
**BIYAN**  
**SHUKRIA**  
**TINGKI**  
**GOZAIMASHITA**  
**EFCHARISTO**  
**KOMAPSUMNIDA**  
**MAAKE**  
**LAH**  
**GRAZIE**  
**MEHRBANI**  
**PALDIES**  
**BOLZİN**  
**MERCI**  
**MINMONCHAR**  
**MAKETAI**  
**UNALCHEESH**  
**HUI**  
**YUSPAGARATAM**  
**WABEEJA**  
**MAIYEKA**  
**ATTO**  
**ANSHA**  
**SPASIBO**  
**DENKAUJA**  
**NENACHALHYA**  
**UNALCHEESH**  
**HATUR GUI**  
**EKOJU**  
**SIKOMO**  
**CHALTU**  
**NUHUN**  
**SNACHALHUYA**  
**SPASSIBO**  
**TAVTAPUCH**  
**MEDAWAGSE**  
**BAUKA**  
**SANCO**  
**MERASTAWHY**  
**GAEJTHO**  
**AGUYJE**  
**FAKAAUE**